

5 PERFORMING A SINGLE TEST

A Select a test from the main menu by moving the cursor.

B The test will begin when the head unit is placed over the detector, breaking the infrared beam. When the detector is activated, remove Testfire by lowering it gently. Testfire will return to idle.

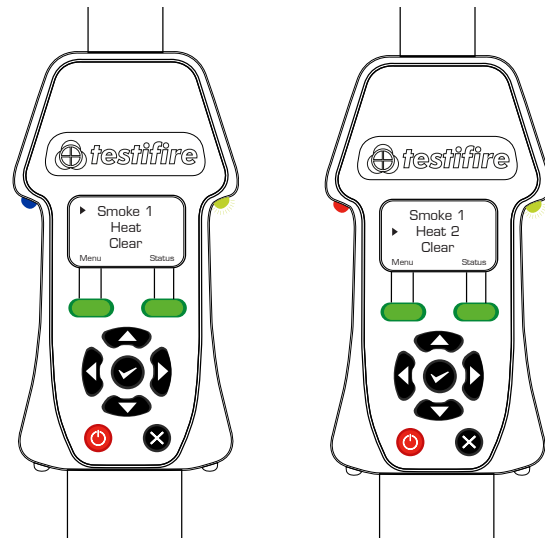


NOTE:

During a smoke test a slight 'popping' sound may be heard. This is normal and part of the test procedure.

SEQUENTIAL TESTING. SMOKE + HEAT TEST

A Press the enter key to select smoke, followed by heat.



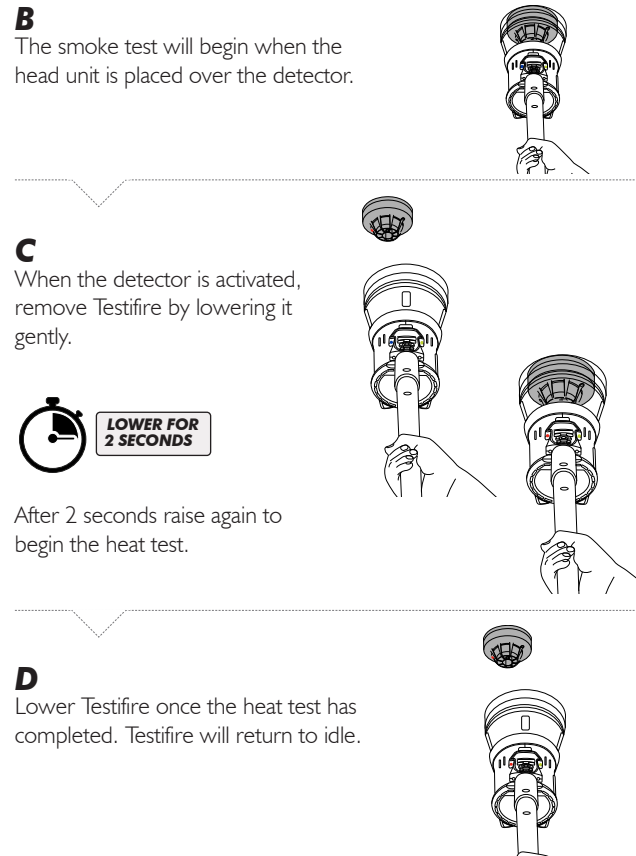
B The smoke test will begin when the head unit is placed over the detector.

C When the detector is activated, remove Testfire by lowering it gently.



After 2 seconds raise again to begin the heat test.

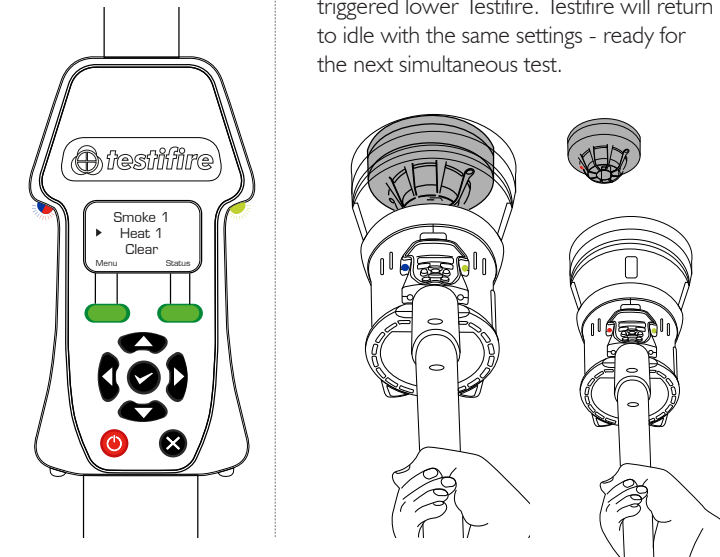
D Lower Testfire once the heat test has completed. Testfire will return to idle.



SIMULTANEOUS/MULTI-SENSOR TESTING

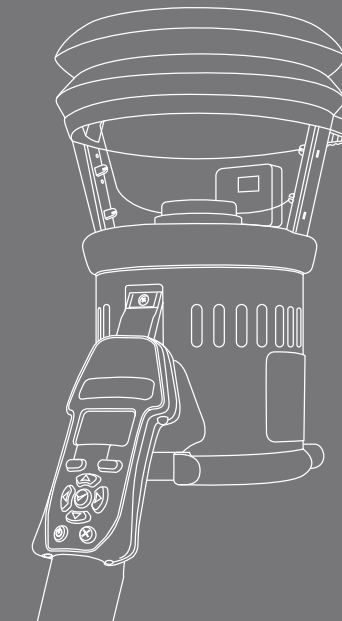
A Press the enter key **Twice** to select each test.

B Raise Testfire over the detector. Smoke and heat are tested at the same time in a simultaneous test. Once the alarm is triggered lower Testfire. Testfire will return to idle with the same settings - ready for the next simultaneous test.



NOTE

The test LED will alternate the colour of all selected test modes when selected for a simultaneous test.



testifire

QUICK START GUIDE

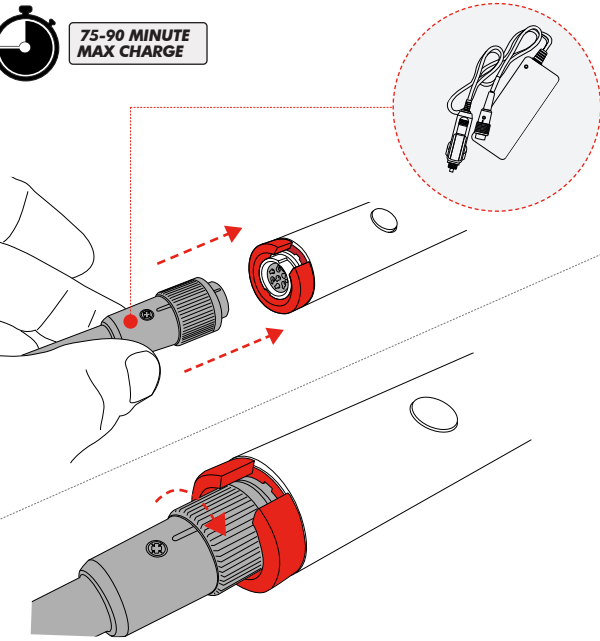
www.detectortesters.com/testifire

1 CHARGING THE BATTERY

Connect the charger to a power source. Connect the battery baton to the charger and turn the locking ring.

NOTE:

Always disconnect the battery from the charger as soon as it is fully charged.

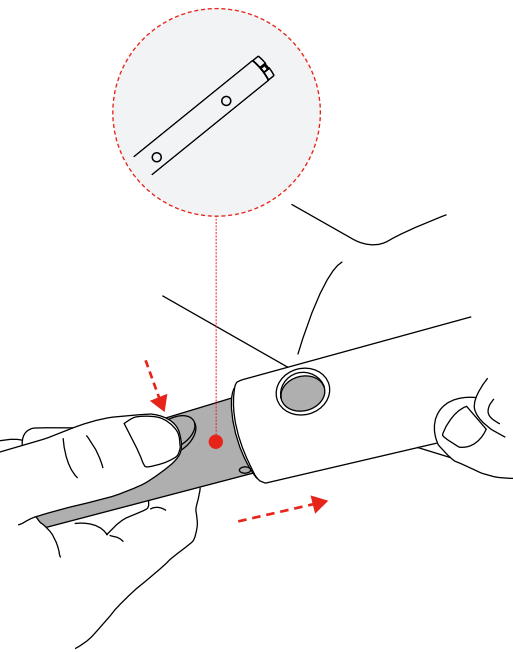


2 INSERTING THE BATTERY BATON

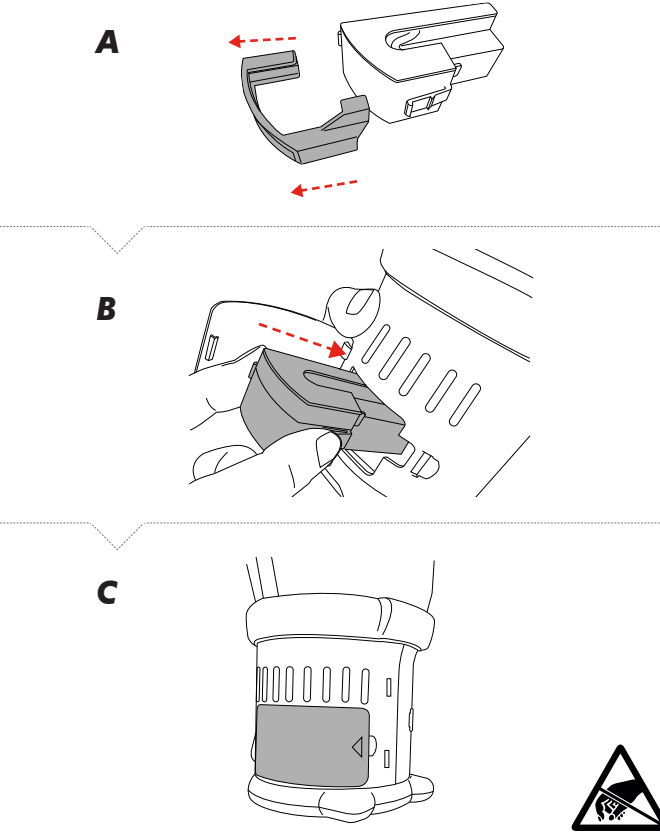
Align the button with the location hole in the handle and push the Battery Baton into the handle until the button springs up through the hole.

NOTE:

Do not use undue force to insert the battery baton.



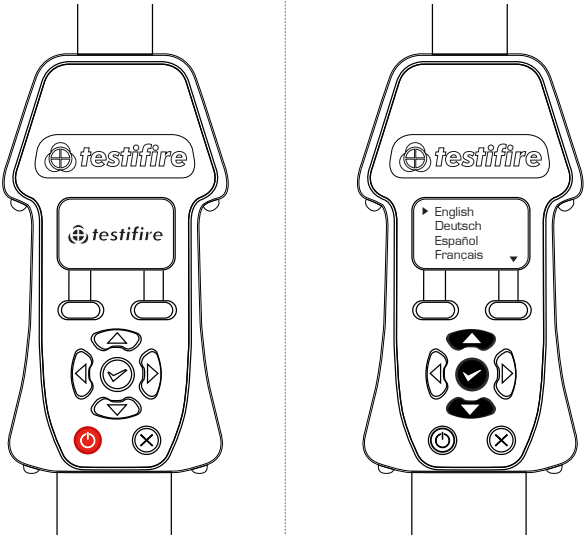
3 INSERTING THE SMOKE CAPSULE



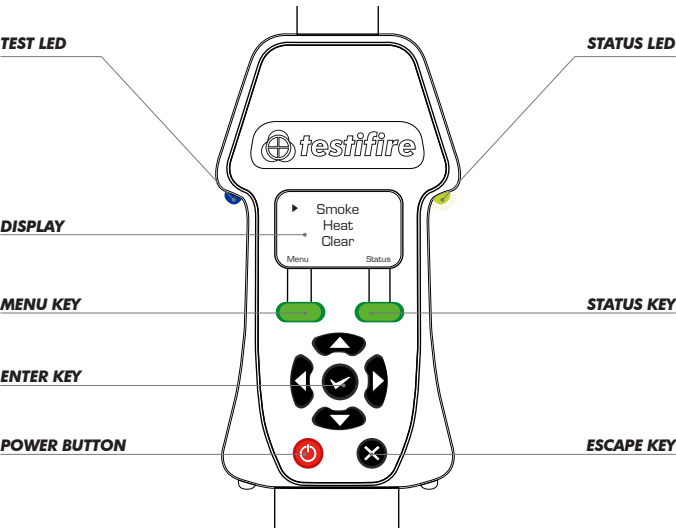
4 POWERING ON THE UNIT

A Press and hold the red power button for 2 seconds.

B Select your required operating language.



Download the full user manual by scanning the QR code or by visiting detectortesters.com/manuals



LED REFERENCE CHART

TEST LED

- Blue = Smoke
- Red = Heat
- Clear = Clearing
- Flashing Blue/Red = Smoke/Heat simultaneous test

STATUS LED

- Flashing Slow Green = Idle Mode
- Flashing Fast Green = Operational Mode
- Flashing Red = Battery requires charging
- Solid Red = Error
- Flashing Green/Red = Testfire TimeOut